



Faculty Lectures And Timings

REGISTRATION & BREAKFAST

Expo Hall: 7:00am - 8:00am

8:00am – Welcome & Introductory Remarks - JEREMY PHILLIPS

Morning Theme: **DIFFICULT CASE IMMUNOBIOLOGY AND DYSFUNCTION – IMMUNOLOGY AND HYPERMOBILITY**

8:15am – 9:15am – PAUL ANDERSON, N.M.D.

Clinical Importance of Mast Cell Immunology – The Basis of the “Triad”

A major area or triggering for the sensitized and hard to treat patient is the immunological derangement leading to the “triad” of Mast Cell Disorders, Dysautonomia, and Hypermobility Syndromes.

In this session Dr. Anderson will break down the role of the inflammatory cell “quartet” (it’s not just mast cells) and their triggers, cross triggers, and clinical connections to the ‘Triad’.

9:15am – 10:15am – SUEANNE BADDOUR, DNP, APRN

Recognizing and Assessing the Hypermobility Patient

Hypermobility is joint laxity that can occur with or without syndromic features and may be a feature of an underlying connective tissue disorder.

The definition of hypermobility will be discussed, as well the most common hereditary connective tissue disorders (hypermobility Ehlers-Danlos syndrome (hEDS) and hypermobile spectrum disorders (HSD)). Recognizable features, inheritance pattern, and clinical diagnostic criteria will be reviewed.

MORNING BREAK: 10:15am – 11:00am

11:00am – 12:00pm – SUEANNE BADDOUR, DNP, APRN

Hypermobility Patients: Next Steps and Management Considerations

Hypermobility Ehlers-Danlos syndrome and hypermobile spectrum disorders are highly associated with several other medical conditions, such as dysautonomia and mast cell activation syndrome.

Each individual is unique in their presentation of the condition. Prevalence of these associated conditions will be presented, as well as an approach to manage the hypermobile patient’s medical care. Case studies will be presented.

12:00pm – 12:30pm – TERESA MCBRIDE, N.D.

Being a ToxDetective For Your Sensitized & Reactive Patient (Non-CME)

Environmental toxicants are ubiquitous in our world, yet this common trigger of patient sensitivity is often overlooked. This talk will focus on how to test for toxicant exposure, often missed clues when assessing exposure, and health impacts associated with common toxicants.



LUNCH BREAK: 12:30pm – 1:45pm

Faculty Lectures And Timings

Afternoon Theme: **MANAGEMENT OF SENSITIZED PATIENTS**

1:45pm – 2:45pm – LAUREN TESSIER, N.D.

EDS, MCAS, CCI, ASD: Interoception and Proprioception

Many patients suffering from treatment reactivity may have underlying conditions interfering with toleration of treatment. One possible, and often overlooked source of reactivity may stem from neurodivergence/ASD- which is highly correlated with EDS, MCAS, and CCI or complex chronic illness. Issues with interoception and proprioception, common symptoms of neurodivergence, may play an unexpected role in the reactive patient. More specifically, how the incidental mismanagement of the unique needs of an exceptional nervous system may lead to reactivity. The discussion shall cover how the clinician may determine the involvement of these issues, in addition to a review of possible management interventions, including their choice and individualized application.

2:45pm – 3:15pm – PAUL ANDERSON, N.M.D.

Primary Aggravating Comorbidities Part-1

As discussed in his prior lecture, Dr. Anderson outlined the immunology of the ‘Triad’ and the triggering / cross triggering that happens to create the constellation of signs and symptoms involved in our hardest to treat patients. In this two-part presentation he will break down aggravating comorbidities. While these comorbidities are not always present, they are areas the clinician should look to evaluate therapeutic areas to assess and potentially address in more complex cases. Areas such as genomics, toxicity, infectious and autoimmune illness, gastrointestinal dysfunction, endocrine imbalances, and others will be discussed.

3:15pm – 3:45pm – BOB MILLER

Inflammasomes, HAMPS, DAMPS and PAMPS from S-Nitrosation (Non-CME)

Changes in homeostasis, no matter how small, may trigger the assembly of inflammasomes which release pro-inflammatory mediators such as cytokines. This possible mechanism is referred to as HAMPS; homeostasis altered molecular patterns. HAMP generation from any stimuli may result in the same reactive manner as their cousins DAMPs (damage associated molecular patterns) and PAMPs (pathogen associated molecular patterns) initiating a strong immune response even though the substrate may be appropriate for the underlying condition.

This phenomenon presents an unexpected reactivity that is separate and different from a Herxheimer reaction creating challenges for both the patient and clinician. In this talk we will examine the genetic and epigenetic factors that contribute to S-Nitrosation, where aberrant Nitric Oxide nitrosates Cysteine, leading to a cascade of inflammatory events.

AFTERNOON BREAK: 3:45pm – 4:30pm

4:30pm – 5:15pm – PAUL ANDERSON, N.M.D.

Primary Aggravating Comorbidities Part-2

This session will complete the two-part discussion of primary aggravating comorbidities in complex cases.

5:15pm – 6:00pm

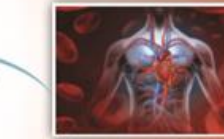
EXPERT PANEL DISCUSSION – All Faculty

Patient Management Across the Chronic Illness Spectrum

5:15pm – 6:00pm Evening Reception



Day 1 Agenda – September 20th, 2024



Faculty Lectures And Timings

REGISTRATION & BREAKFAST

Expo Hall: 7:00am - 8:00am

Morning Theme: **THE MCAS – POTS – EDS TRIAD**

8:00am – 8:45am – **PAUL ANDERSON, N.M.D.**

Infectious Comorbidity: Diagnosis and Management Part-1

While all comorbid conditions are critical to assess and treat in complex cases, infectious comorbidities are a primary trigger due to their ability to perpetuate inflammatory triggering of the cellular quartet, triad of illness, and beyond. In part-1 Dr. Anderson will discuss the common triggering chronic infections residing in the GI tract, other mucosa, and systemic compartments.

8:45am – 9:45am – **LEONARD WEINSTOCK, M.D.**

The “Triad” MCAS – POTS – EDS Part-1

The “Triad” of diagnostic entities described in this session are MCAS, POTS, and EDS. They share many immunological bases and crossovers. In recent years it has become more and more apparent that the complex-chronic patient frequently has two or three of these entities concurrently.

The purpose of this lecture is to define these entities, elaborate on diagnostic / lab criteria, and to discuss the connections to each one.

MORNING BREAK: 9:45am – 10:30am

10:30am – 11:30am – **LEONARD WEINSTOCK, M.D.**

The “Triad” MCAS – POTS – EDS Part-2

In this session, Dr. Weinstock will discuss at length the treatment strategies for the triad of MCAS, EDS, and POTS.

A discussion of the lack of approved agents, use of off-label agents, and deeper clinical management will be had.

11:30am – 11:45am – **PAUL ANDERSON, N.M.D. and ANDREW CUSCIANNA**

International Society for Orthomolecular Medicine (ISOM) Update

11:45am – 12:15pm – **JULIE GREENBERG, N.D., RH(AHG), MBA**

Yeasty Beastly! How Mycotoxins & Mold Impact Derm Patients (Non-CME)

Learn how testing for and treating mold & mycotoxins can help get to the root cause of what’s keeping your toughest dermatology patients from getting better. Two case studies will be presented (one on Alopecia areata, one on eczema) with lab results, before & after photos and a discussion of protocols.



LUNCH BREAK: 12:15pm – 1:30pm

Faculty Lectures And Timings

Afternoon Theme: **DIFFICULT CASE MANAGEMENT**

1:30pm – 2:15pm – **PAUL ANDERSON, N.M.D.**

Infectious Comorbidity: Diagnosis and Management Part-2

Continuing from part-1, Dr. Anderson will discuss the aggravating factors caused by infectious resistance and biofilms.

2:15pm – 3:15pm – **TODD A. BORN, N.D., CNS**

Difficult Case Management Part – 1

33 case studies of real patients’ complex health concerns will be presented. Dr Born will present their problem lists, how they were assessed, diagnosed, along with treatment strategies and outcomes. These conditions will be many of what naturopathic/functional/integrative medicine providers see every day and a few that some may never see.

He will also review common cases that “conventional” medicine doesn’t have many solutions or much to offer. The patients ages range from a few days old to mid-80’s.

3:15pm – 3:45pm – **BRENDEN COCHRAN, N.M.D.**

Taming Toxins – Detox Support with Oxygen and Ozone for Reactive Patients (Non-CME)

Stratos EBOO aims to reduce oxidative stress by upregulating antioxidant systems, disrupting biofilms and infections, promoting homeostatic balance in TH1 and TH2, and supporting the elimination of toxins such as metals, microplastics, and inflammatory Beta-2 microglobulin.



AFTERNOON BREAK: 3:45pm – 4:30pm

4:30pm – 5:15pm – **PAUL ANDERSON, N.M.D.**

Infectious Comorbidity: Diagnosis and Management Part-3

In this follow-up to parts 1&2, Dr. Anderson will discuss clinical management strategies commonly required when infectious comorbidity is present in a complex-chronic case.

5:15pm – 6:00pm

EXPERT PANEL DISCUSSION – All Faculty Patient Sensitization, The Triad, and Case Management

EVENING SESSION

Demonstration Rooms: 6:00pm – 7:30pm Hors D’oeuvres and Interactive Workshops

Finish Day 2 with an opportunity to become better informed in a relaxed atmosphere. Watch some great presentations, with food and beverage served. This is your chance to see hands-on demonstrations, as well as asking direct questions in a small group setting.



Day 2 Agenda – September 21st, 2024



Faculty Lectures And Timings

REGISTRATION & BREAKFAST Expo Hall: 7:30am - 8:30am

Morning Theme: THE IMMUNOME AND CASE MANAGEMENT

8:30am – 9:30am – PAUL ANDERSON, N.M.D.

Endocrine Influences in Sensitized Patients: Assessment and Management

Next to infectious comorbidity endocrine instability is a major contributor to case non-resolution. In this session Dr. Anderson will break down the commonly deranged endocrine areas, how these derangements differ from primary endocrinopathies, and strategies for assessment and functional treatment.

9:30am – 10:30am – TODD A. BORN, N.D., CNS

Difficult Case Management Part – 2

33 case studies of real patients' complex health concerns will be presented. Dr Born will present their problem lists, how they were assessed, diagnosed, along with treatment strategies and outcomes. These conditions will be many of what naturopathic/functional/integrative medicine providers see every day and a few that some may never see. He will also review common cases that "conventional" medicine doesn't have many solutions or much to offer. The patients ages range from a few days old to mid-80's.

MORNING BREAK: 10:30am – 11:15am

11:15am – 12:15pm – PAUL ANDERSON, N.M.D.

Dr. Rogers Prize lecture: Immunotherapies and the Sensitized Patient

An area of therapeutics which can be both clinical beneficial and clinical perplexing is the use and management of natural or quasi-natural immunotherapies. In the sensitized and complicated patient these may need different assessment and management than in a more straightforward clinical situation such as uncomplicated autoimmunity or other less complex cases. New science around variable dosing of LDN, the "two-edged sword" nature of vitamin D in complex illness, and other immunomodulatory therapies will be discussed.

LUNCH BREAK: 12:15pm – 1:15pm

Afternoon Theme: CLINICAL MANAGEMENT YOU CAN USE TOMORROW

1:15pm – 2:15pm – LAUREN TESSIER, N.D.

Addressing the Sensitized Patient: First Clinical Consideration

This day in age, even the best clinicians find themselves busy and overloaded. As a result, many simple, albeit powerful interventions are overlooked when it comes to preventing and addressing patient reactivity. The discussion shall cover preventative measures which may be helpful in preventing treatment reactivity. Additionally, the discussion shall include a discussion of individualized application, including intervention choice and ordering.

Faculty Lectures And Timings

2:15pm – 3:00pm – PAUL ANDERSON, N.M.D.

Case Reviews Part-1

Dr. Anderson has been collecting case examples in recent years from some of the more complicated patients he has seen. This session will be delivered in two parts and will aim to use real time cases to illustrate "unwinding a case" when the whole system is out of balance and unable to autoregulate.

BRIEF COMFORT BREAK: 3:00pm – 3:15pm

3:15pm – 4:00pm – PAUL ANDERSON, N.M.D.

Case Reviews Part-2

This will conclude the cases begun in part-1 of this case discussion series.

4:00pm – 4:30pm EXPERT PANEL DISCUSSION – All Faculty
Stepwise Clinical Management of the Sensitized Patient

4:30pm Closing Remarks & Adjourn

Southwest College of Naturopathic Medicine & Health Sciences (SCNM) has evolved to **Sonoran University of Health Sciences**

 **SONORAN UNIVERSITY**
OF HEALTH SCIENCES



Exploration of the move to become a university began in 2018 as they recognized the institution was growing beyond its status as college. With new academic programs, expanded research, and enhanced service to the community, this institution truly is a university.



www.sonoran.edu
480-858-9100

AAMP extends its appreciation to Sonoran University for once again being our Conference Educational Partner

Day 3 Agenda – September 22nd, 2024